

# outback parasol

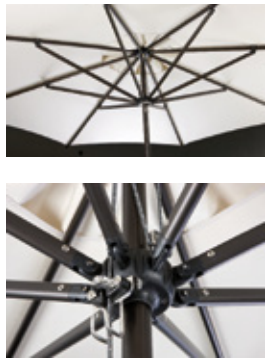
## The harsh reality

Complete UV protection from the sun. Ideal for commercial and domestic environments. Components made from virtually indestructible Carbylex. Double stitched canvas, giving you all the cover you need from the harsh sun.

**RUST FREE FRAME - NO MAINTENANCE - CENTRE POLE 3mm WALL THICKNESS  
- 2 YEAR WARRANTEE ON FRAME**

39 BOFORS CIRCLE, EPPING 2, CAPE TOWN, P.O. BOX 179, EPPINDUST, 7475 TEL: 021 535 2740 FAX: 021 535 2735  
[www.walu.co.za](http://www.walu.co.za) email: [info@walu.co.za](mailto:info@walu.co.za)

  
**walu**



# outback parasol

Outback parasol were designed to be very stylish and extremely durable, utilizing a modern mix of aluminium, stainless steel and Carbylex.

### Key Features:

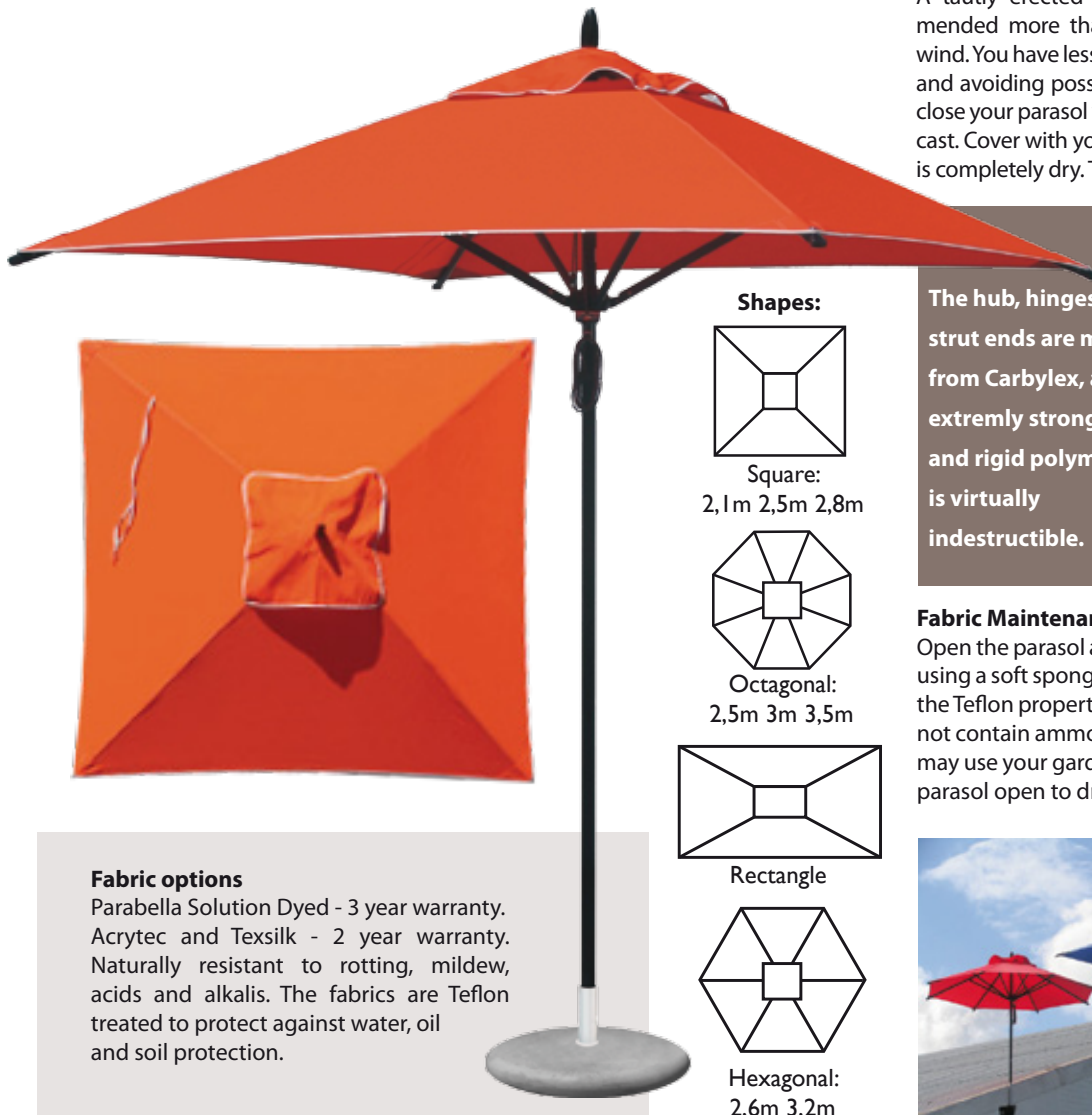
- 3mm wall thickness extruded aluminium frame
- Struts have a inner wall stiffener, wall thickness is 1.5mm
- All working parts produced from extremely durable Carbylex
- All fittings and fasteners produced from marine grade stainless steel
- Stainless Steel Pulley System
- Clam Cleat system to secure rope

### Opening the umbrella and Safety

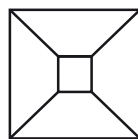
When opening the umbrella, pull out the struts gently to ensure they move freely, and then gently pull on the pulley rope to slowly raise the sliding hub upwards. Raise until the fabric is taut and then insert the rope into the clam cleat. Then roll up the remaining rope and hang over the clam cleat hook.



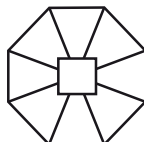
A tautly erected parasol will be stronger and recommended more than having the canvas flapping in the wind. You have less chance of the parasol being blown over and avoiding possible strut damage. Please remember to close your parasol when not in use or if high winds are forecast. Cover with your PVC cover bag but only if the canvas is completely dry. This will prevent mill dew and rotting.



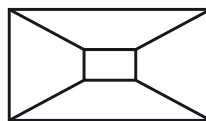
### Shapes:



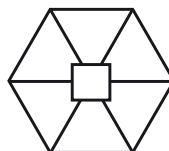
Square:  
2,1m 2,5m 2,8m



Octagonal:  
2,5m 3m 3,5m

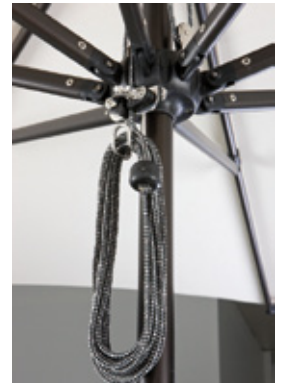


Rectangle



Hexagonal:  
2,6m 3,2m

The hub, hinges and strut ends are made from Carbylex, an extremely strong, tough and rigid polymer that is virtually indestructible.

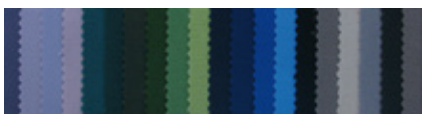


### Fabric Maintenance

Open the parasol and put it on its side and remove dirt by using a soft sponge / brush with water. In order to protect the Teflon properties, use only a mild detergent that does not contain ammonia and never dry-clean the fabric. You may use your garden hose to spray it down. But leave the parasol open to dry completely before closing.

### Fabric options

Parabella Solution Dyed - 3 year warranty.  
Acrytec and Texsilk - 2 year warranty.  
Naturally resistant to rotting, mildew, acids and alkalis. The fabrics are Teflon treated to protect against water, oil and soil protection.



We put our parasols to the test in 75km plus windy conditions. All withstood the test with no broken parts or torn canvas.

### Our Guarantee

Walu parasols come with a 2 year guarantee. This is against defects in Aluminium, working parts and against defects resulting from faulty workmanship. WALU strives to provide the highest quality, we accept no responsibility on fading of fabric or fabric print degradation. The manufacturer will not be liable for any extra costs incurred by the buyer as a result of defects found in the product. WALU products are covered by a full spares backup from our international network.